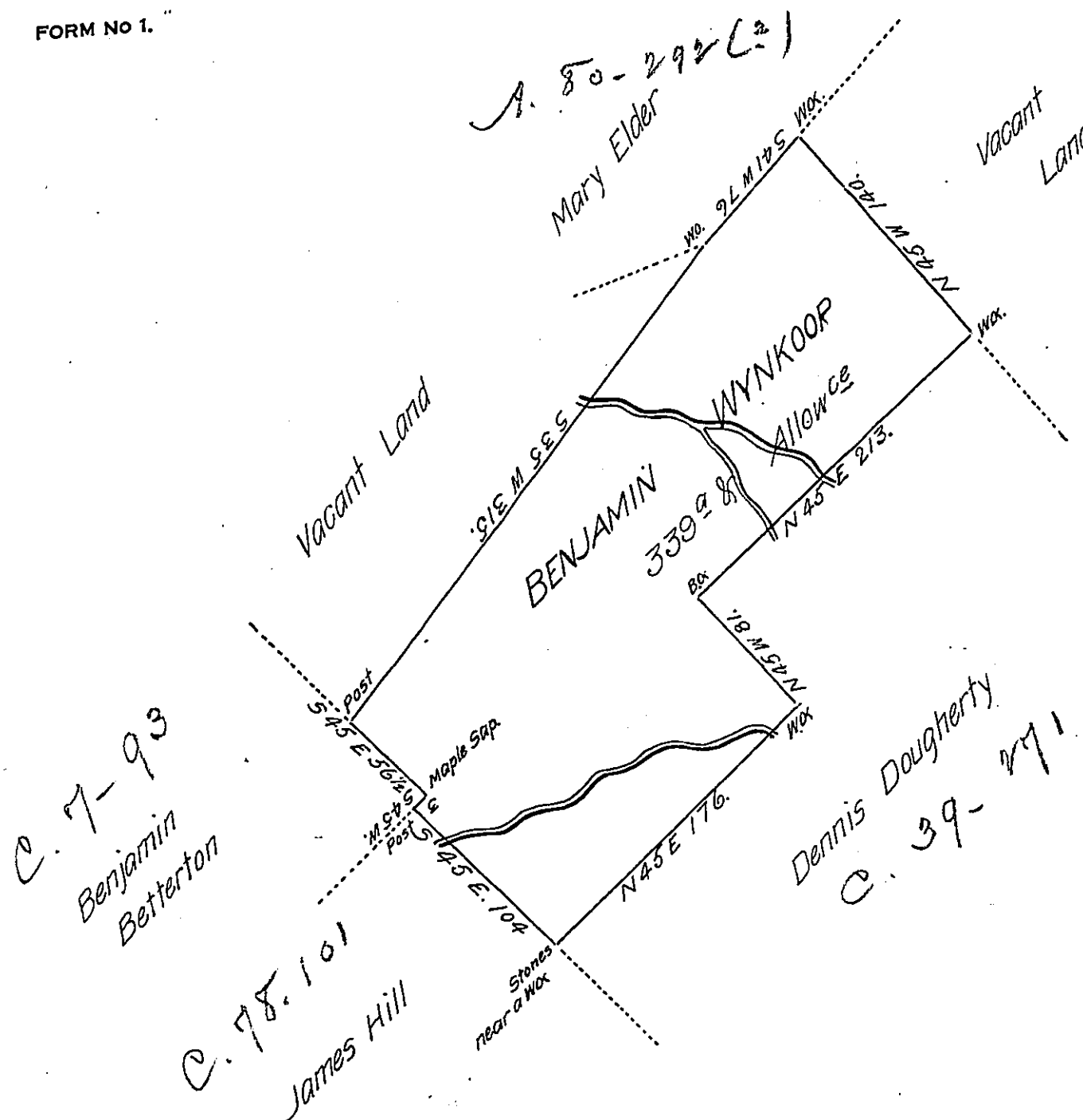


FORM NO 1.



Survey'd to Benjamin Wynkoop on the 1st Day of November 1774 The above Described Tract of Three hundred & thirty Nine Acres & Allowance of Six P.C.t Situate on a Branch of Crooked Creek adjoining Land Survey'd to Dennis Dougherty in Westmorland County By Warrant of the 27th Day of April 1773.

of Joshua Elder D.S.

To John Lukens Esq. S. Gen!

IN TESTIMONY that the above is a copy of the original remaining on file in the Department of Internal Affairs of Pennsylvania, made conformably to an Act of Assembly approved the 16th day of February, 1833, I have hereunto set my Hand and caused the Seal of said Department to be affixed at Harrisburg, this twentyeighth day of June 1907.

Henry Howell
Secretary of Internal Affairs.